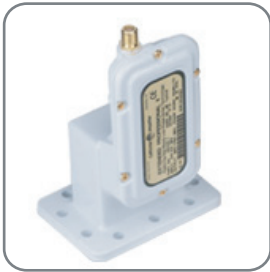


Commercial C-Band & Ku-Band Digi-Ready LNBs



140105_1

Extended C-Band Professional II LNB

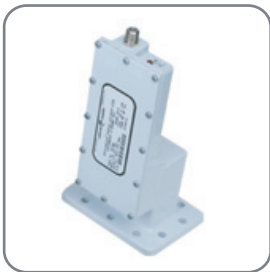
The most widely used Commercial headend LNB in the world

Part Number:	140105_1
Input Frequency:	3.4 to 4.2 GHz
Output Frequency:	950 to 1750 MHz
Noise Temp. Options:	17 or 20° K
Gain:	65 dB Typical
Local Oscillator Stability:	±500 KHz Max

Extended C-Band Phase Locked Loop (PLL) LNB

Cost effective PLL local oscillator stability

Part Number:	140194_1
Input Frequency:	3.4 to 4.2 GHz
Output Frequency:	950 to 1750 MHz
Noise Temp. Options:	20 or 25° K
Gain:	60dB Min, 63 dB Typ
Local Oscillator Stability:	±125 KHz Max



140194

Extended C-Band Phase Locked Loop (PLL) LNB

High local oscillator stability for demanding applications

Part Number:	140194
Input Frequency:	3.4 to 4.2 GHz
Output Frequency:	950 to 1750 MHz
Noise Temp. Options:	20 or 25° K
Gain:	60dB Min, 63 dB Typ
Local Oscillator Stability:	±12 KHz Max

US Ku-Band Phase Locked Loop (PLL) LNB

Cost effective PLL local oscillator stability at Ku-Band

Part Number:	150338_1
Input Frequency:	11.7 to 12.2 GHz
Output Frequency:	950 to 1450 MHz
Noise Figure:	0.8 dB Typ, 0.9 dB Max
Gain:	55 to 65 dB
Local Oscillator Stability:	±210 KHz Max



150338

US Ku-Band Phase Locked Loop (PLL) LNB

High local oscillator stability for demanding applications

Part Number:	150338
Input Frequency:	11.7 to 12.2 GHz
Output Frequency:	950 to 1450 MHz
Noise Figure:	0.8 dB Typ, 0.9 dB Max
Gain:	55 to 65 dB
Local Oscillator Stability:	±25 KHz Max